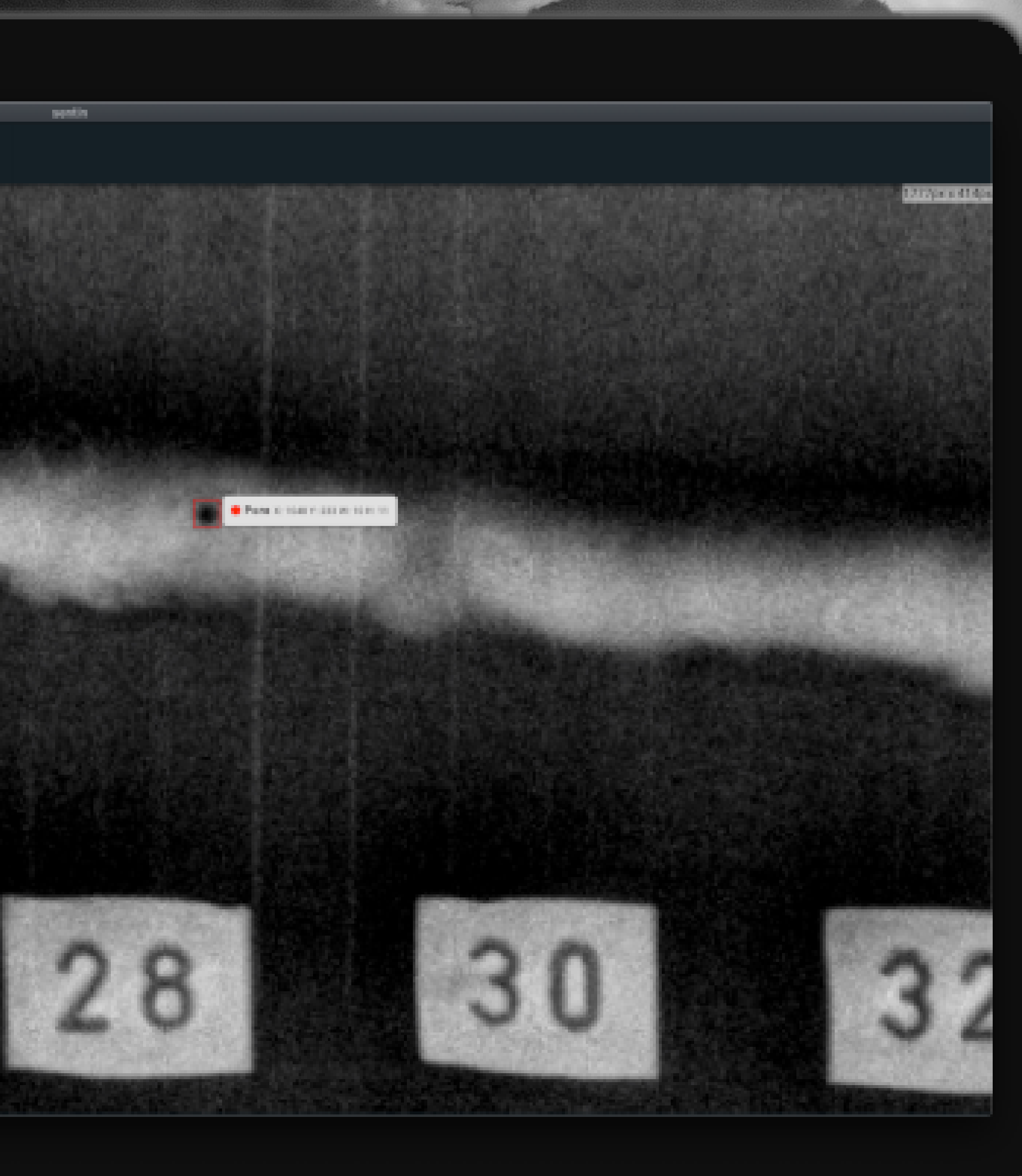


# The right tool. Software for image evaluation.

## Artificial Intelligence. Real Trust.



References

Applus<sup>+</sup> RTD

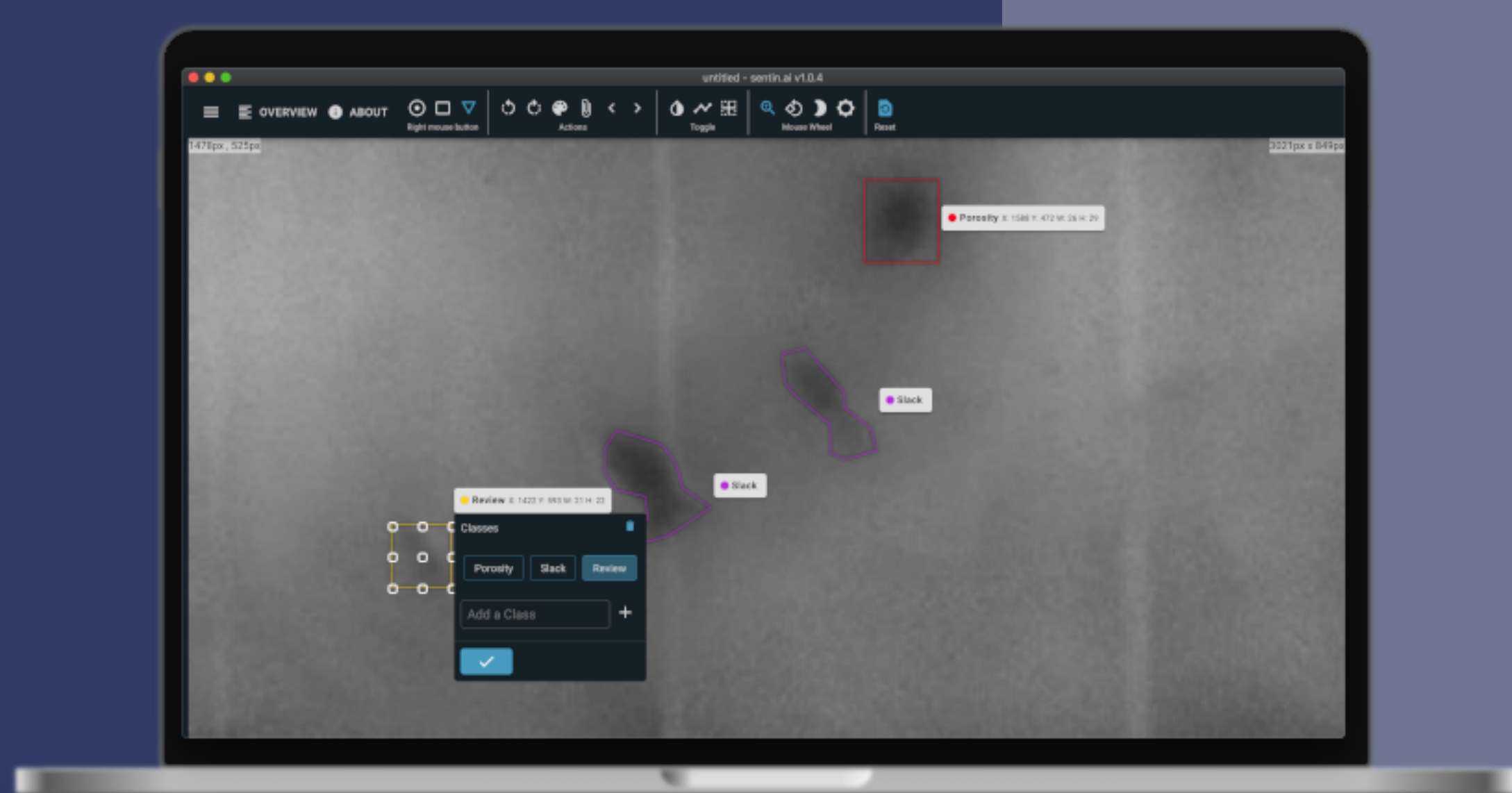
Villeroy & Boch  
1748

EVONIK  
Leading Beyond Chemistry

Example.

### Non-Destructive Testing (NDT)

Many materials or products must be tested for quality and safety without being damaged in the process - such as welded seams in pipelines or other components. The software automatically checks for imperfections and defects like cracks or porosity and marks them.



## Features at a glance

**Automatic evaluation**, sorting and marking of digital images.\*

Works with **already existing** recording systems or data sets.

**Optimized rendering** of the images (filters, colors, sections).

Allows **easy marking** of defects or flaws.

Export of the evaluated images.

**Location-independent**, as local images or cloud connection is possible.

\* This requires a trained evaluation model & appropriate hardware.



# 99%

## Accuracy

A usecase in the aerospace industry

## Consulting

We clarify together whether the use of AI is worthwhile for you.

## Kalibration

Together we configure the algorithms based on your image data.

## Integration

After successful configuration the embedding into your business processes takes place.

## Usage & Updates

You can now use the software without any worries and receive updates and the possibility to get your algorithms retrained.

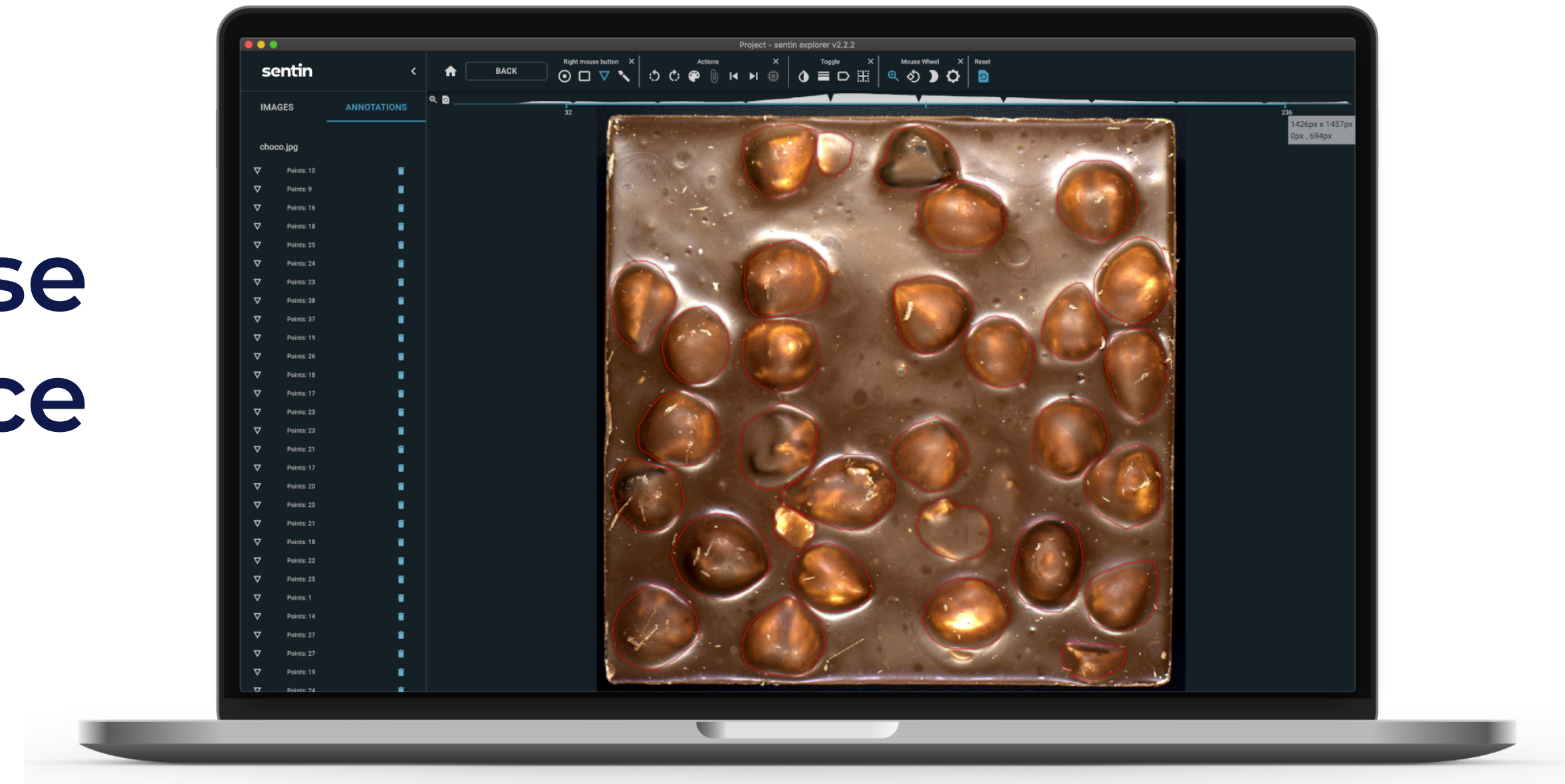


**Dominik Nestler**  
Business Development

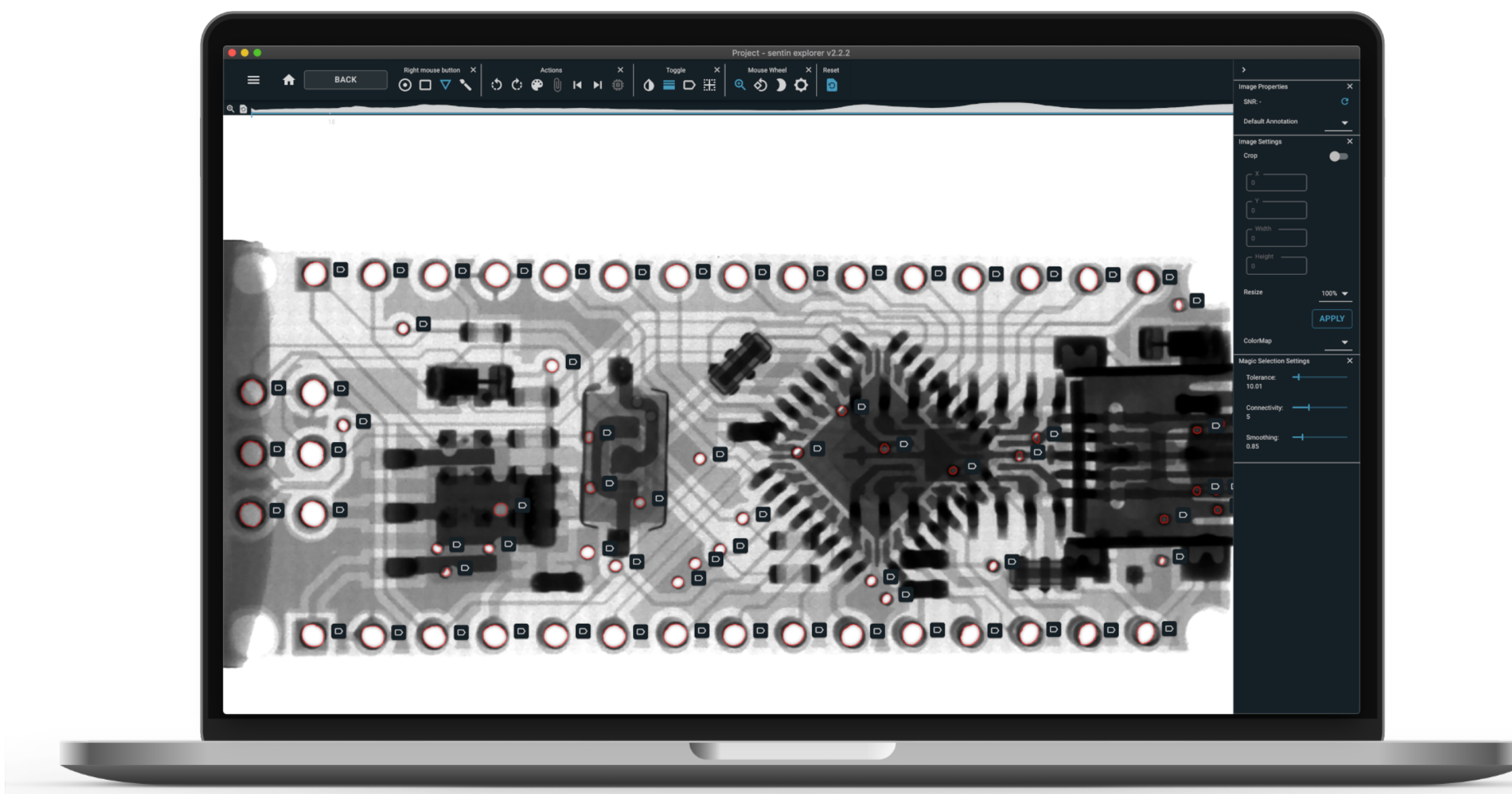
+49 234 54506170

contact@sentin.ai

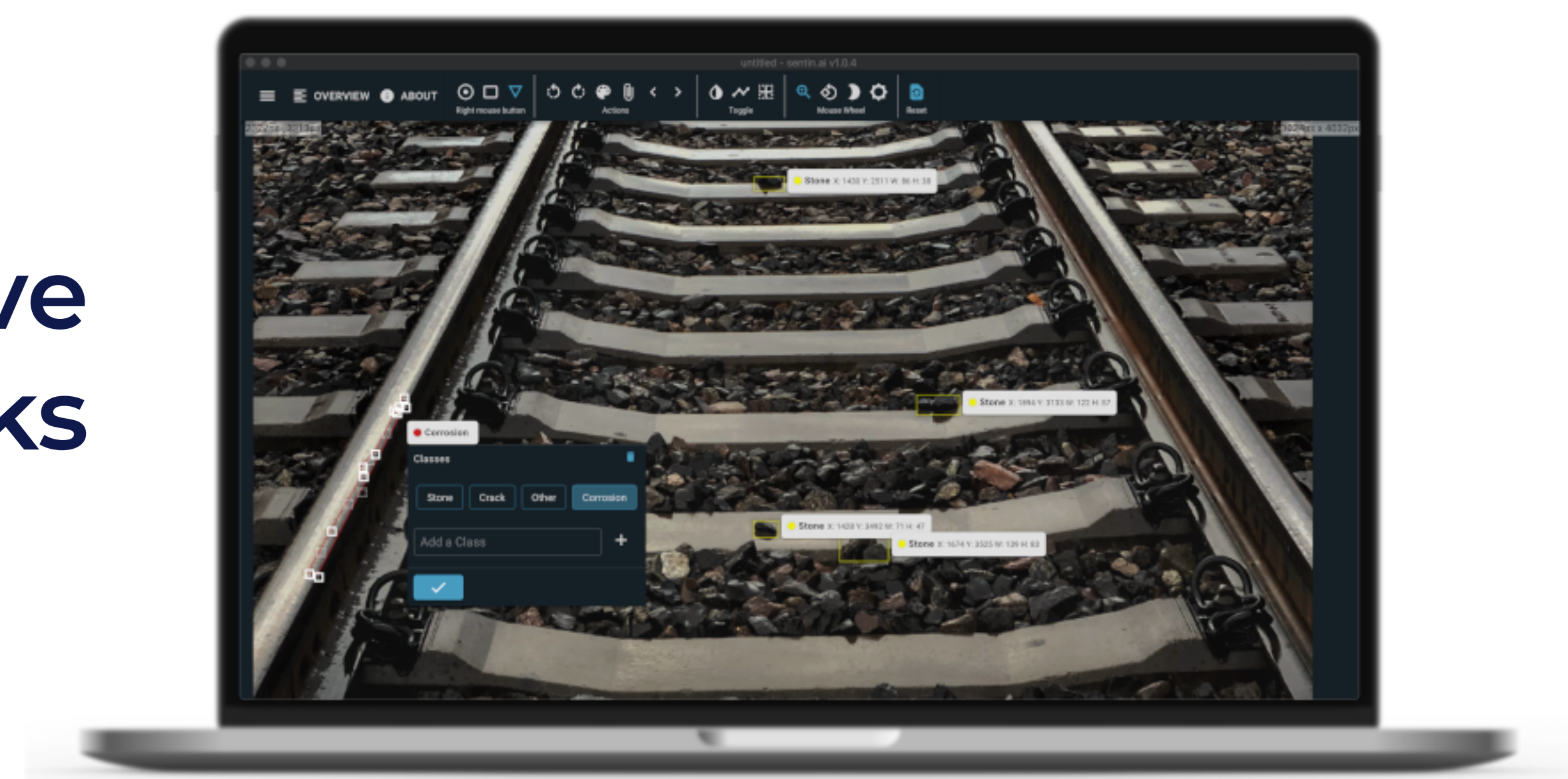
## Precise Quality Assurance



## Detailed Component Testing



## Innovative Infrastructure Checks



# Any Questions? Make an appointment now.

### The Company

The **sentin** team is made up of experienced developers and engineers.

The company focuses on the visual and image-based inspection of materials and products, for which they provide deep learning enabled software solutions for a wide range of industries.

In a wide range of industries, we enable companies to remain market leaders and work more efficiently. We see it as our duty to transform complex technologies into measurable success.

### Recommended System Requirements

#### Frontend

Windows 10,  
MacOS 10.14 (Mojave),  
Ubuntu 16.04 or similar

8GB DDR3 RAM  
2 Ghz Quad-Core Intel Core i5  
FullHD Monitor 1920x1080 Pixel

 [www.sentin.ai](http://www.sentin.ai)

 **sentin** GmbH  
Germany