

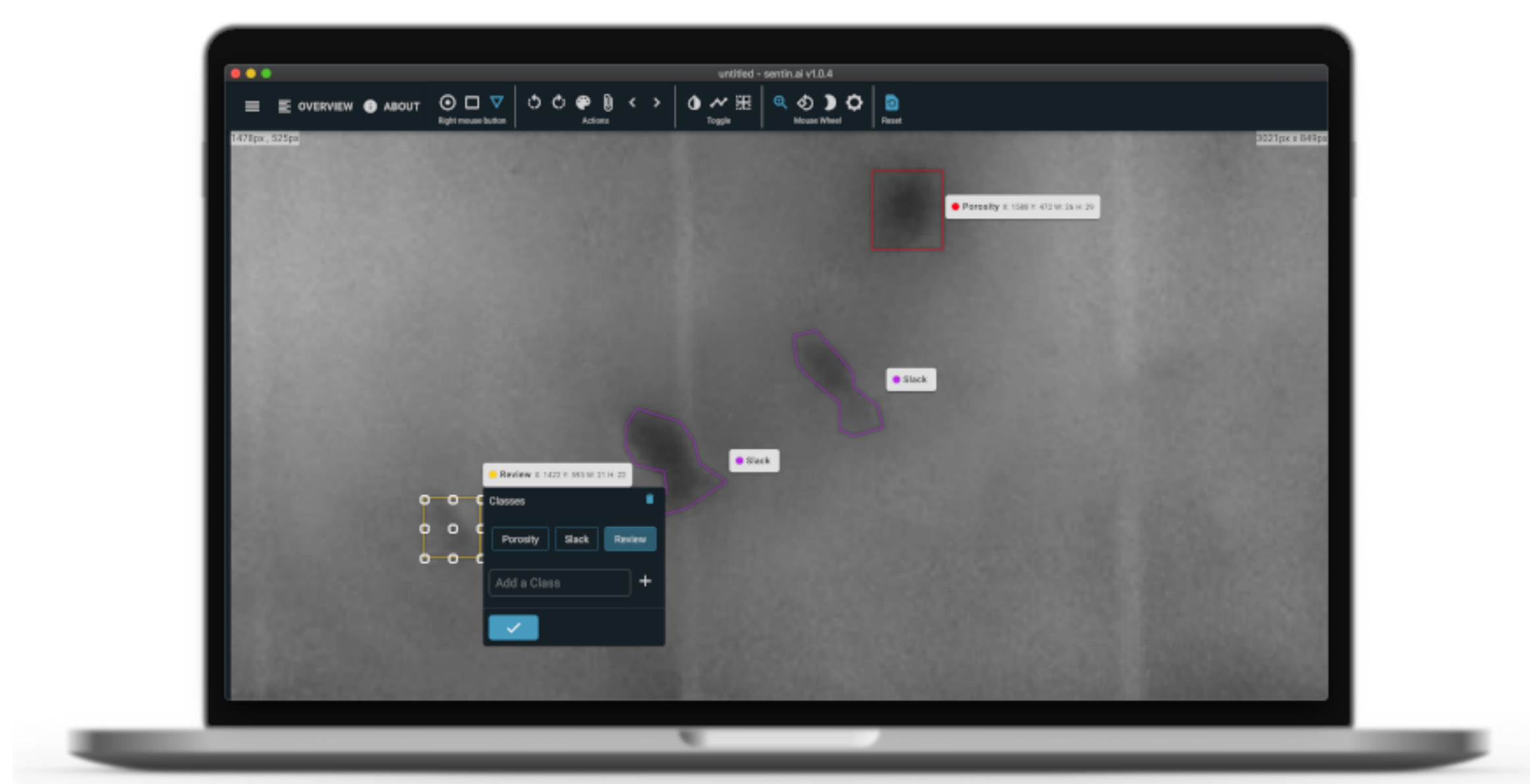
The right tool. Software for image evaluation.



Example.

Non-Destructive Testing (NDT)

Many materials or products must be tested for quality and safety without being damaged in the process - such as welded seams in pipelines or other components. The software automatically checks for imperfections and defects like cracks or porosity and marks them.



Artificial Intelligence. Real Trust.

References



Features at a glance

Automatic evaluation, sorting and marking of digital images.*

Works with **already existing** recording systems or data sets.

Optimized rendering of the images (filters, colors, sections).

Allows **easy marking** of defects or flaws.

Export of the evaluated images.

Location-independent, as local images or cloud connection is possible.

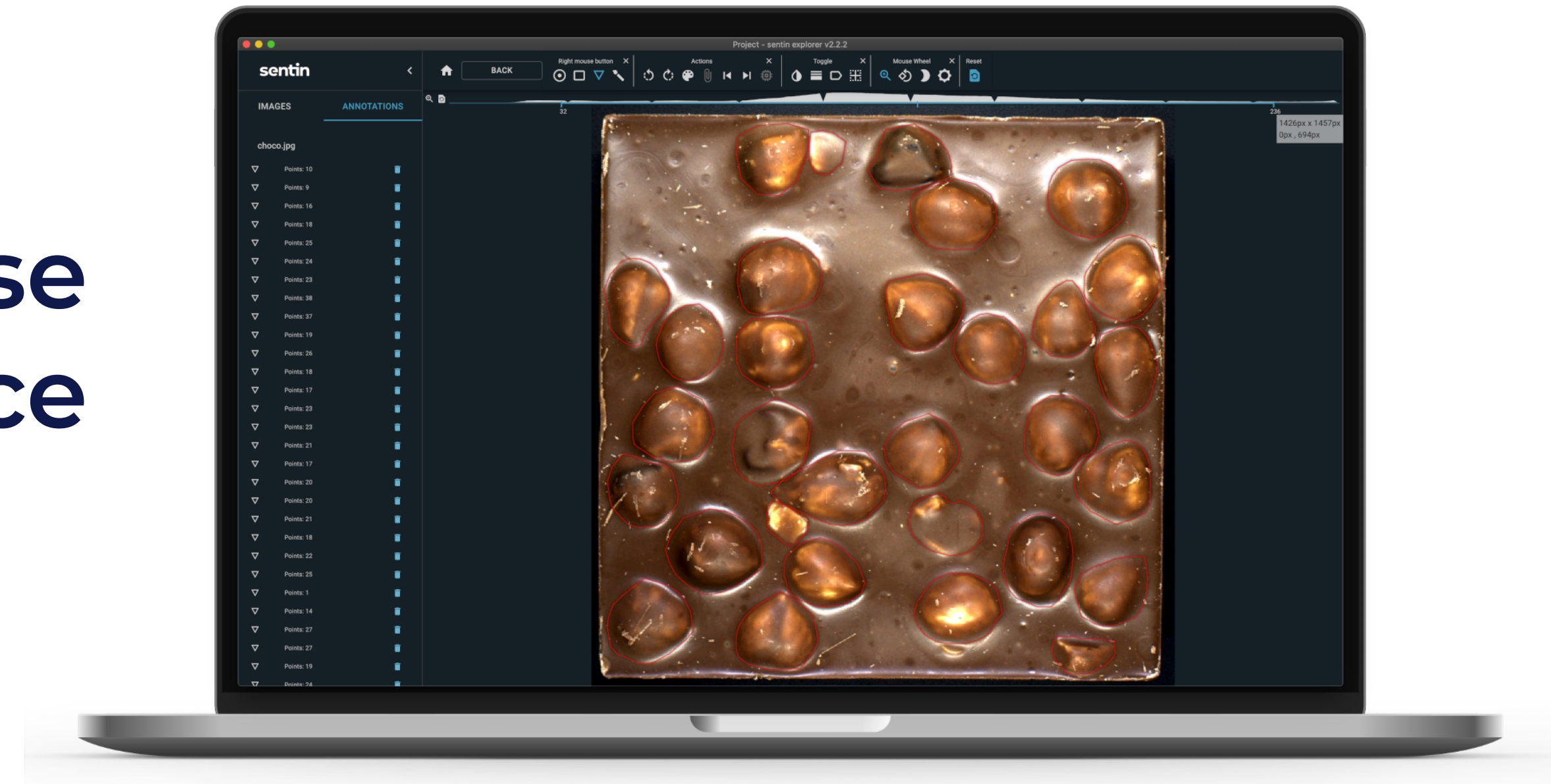
* This requires a trained evaluation model & appropriate hardware.

99%

Accuracy

A usecase in the aerospace industry

Precise Quality Assurance



Consulting

We clarify together whether the use of AI is worthwhile for you.

Kalibration

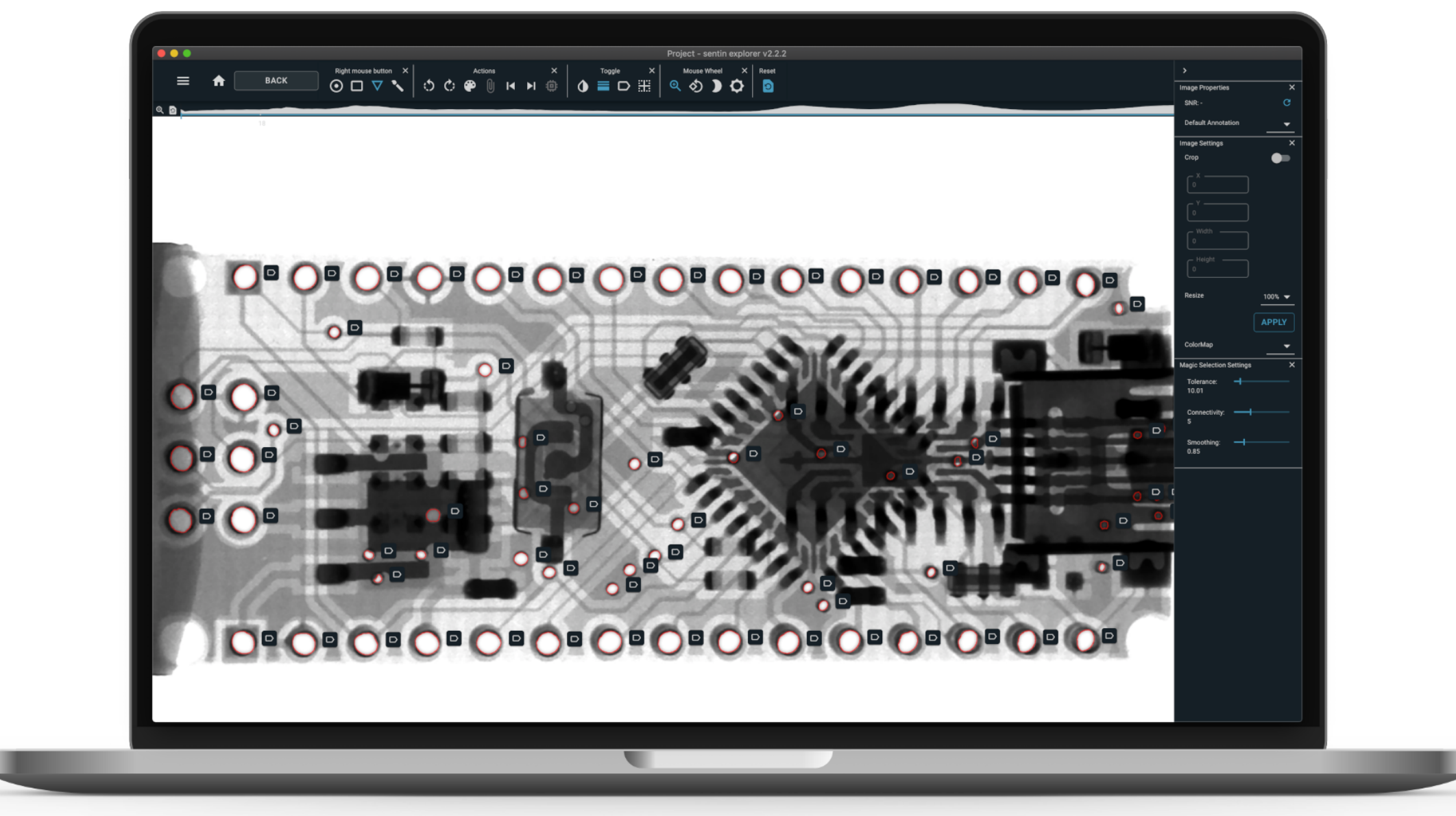
Together we configure the algorithms based on your image data.

Integration

After successful configuration the embedding into your business processes takes place.

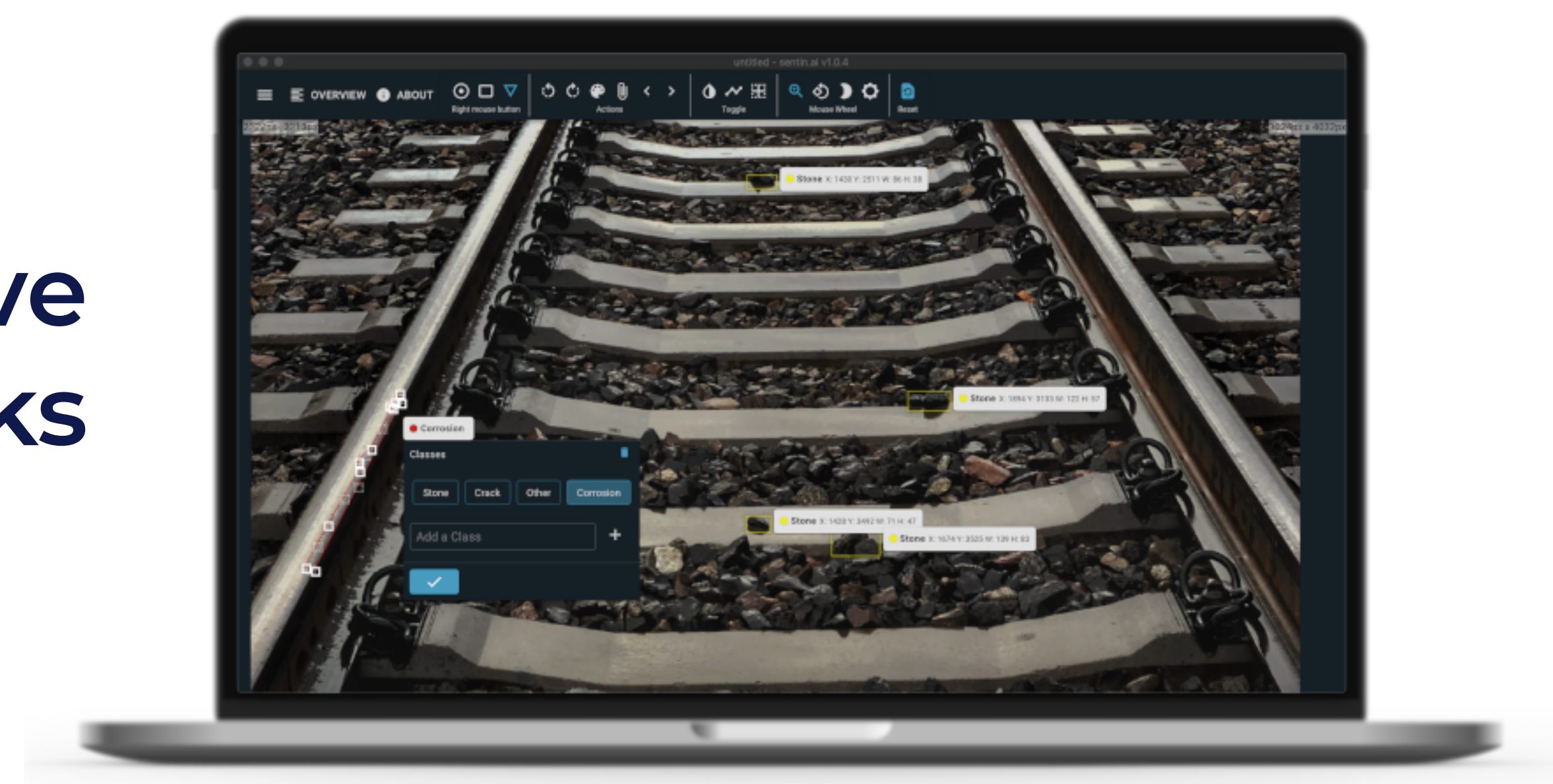
Usage & Updates

You can now use the software without any worries and receive updates and the possibility to get your algorithms retrained.



Detailed Component Testing

Innovative Infrastructure Checks



Any Questions? Make an appointment now.



Dominik Nestler
Business Development

+49 234 54506170

contact@sentin.ai

The Company

The **sentin** team is made up of experienced developers and engineers.

The company focuses on the visual and image-based inspection of materials and products, for which they provide deep learning enabled software solutions for a wide range of industries.

In a wide range of industries, we enable companies to remain market leaders and work more efficiently. We see it as our duty to transform complex technologies into measurable success.

Recommended System Requirements

Frontend

Windows 10,
MacOS 10.14 (Mojave),
Ubuntu 16.04 or similar

8GB DDR3 RAM
2 Ghz Quad-Core Intel Core i5
FullHD Monitor 1920x1080 Pixel

 www.sentin.ai

 **sentin** GmbH
Germany